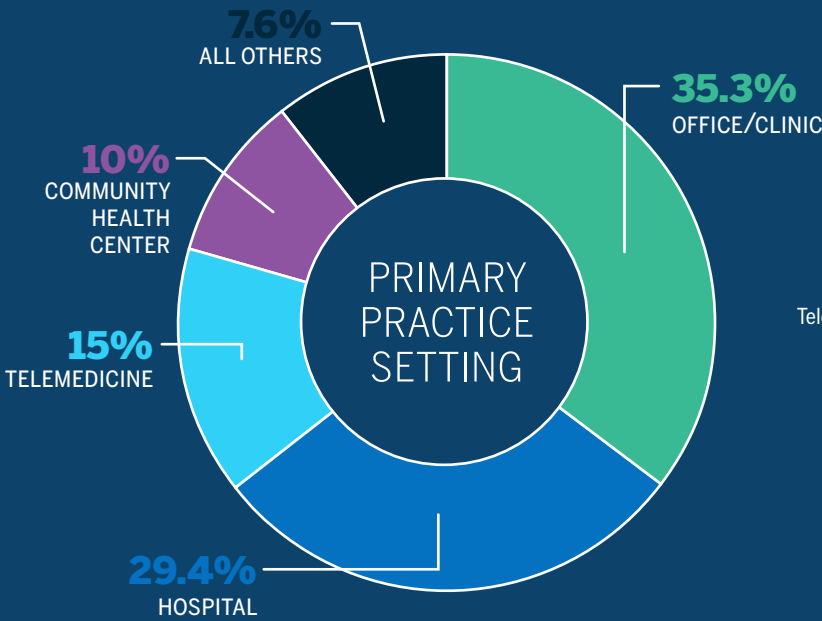
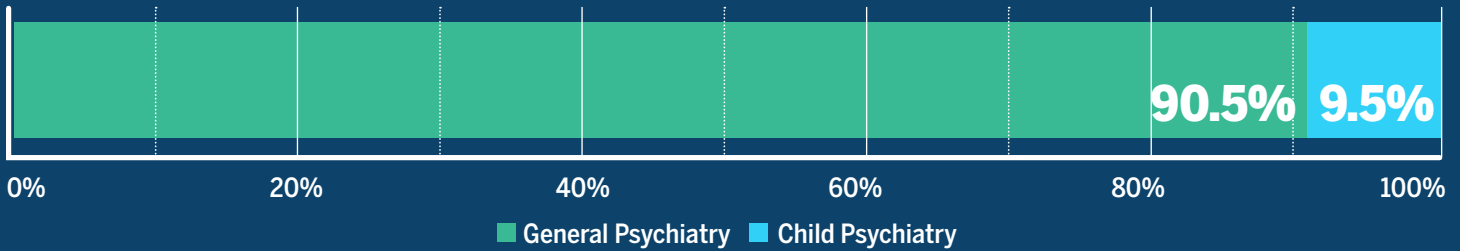




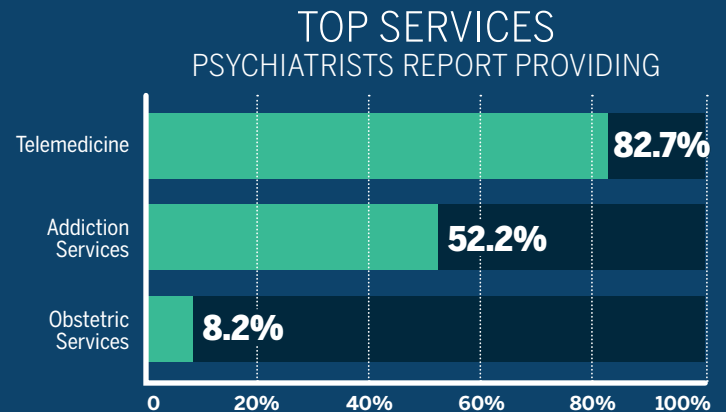
# INDIANA'S PHYSICIAN WORKFORCE CHARACTERISTICS AS OF 2023 RENEWAL

## PSYCHIATRISTS DATA SNAPSHOT

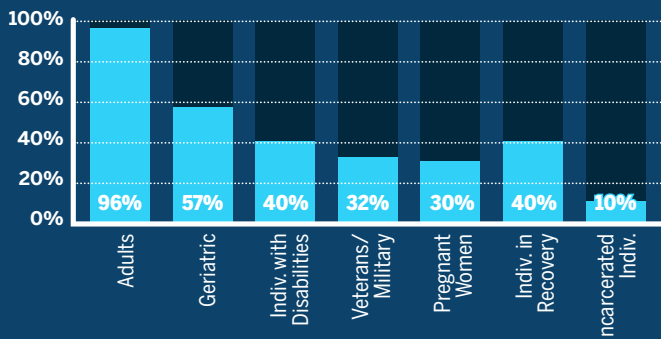
### PSYCHIATRIST-REPORTED SPECIALTIES



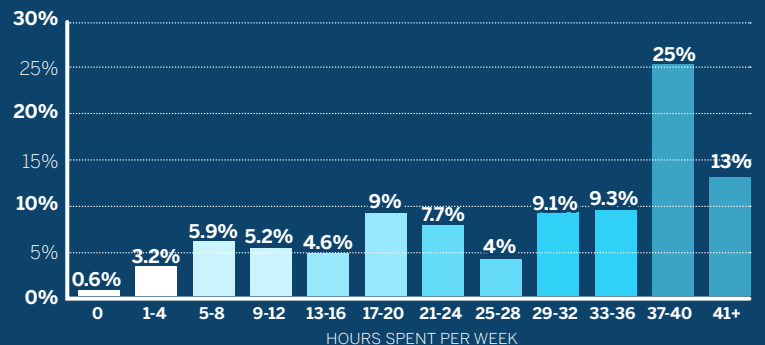
**782** TOTAL ACTIVELY PRACTICING PSYCHIATRISTS



### POPULATIONS PSYCHIATRISTS REPORT SERVING



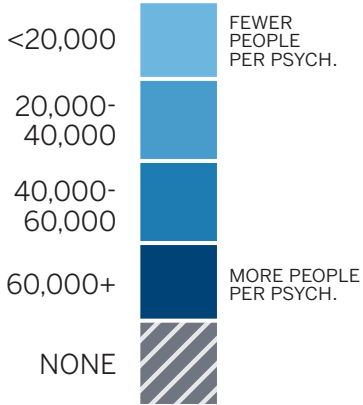
### HOURS SPENT IN DIRECT PATIENT CARE AS REPORTED BY PSYCHIATRISTS



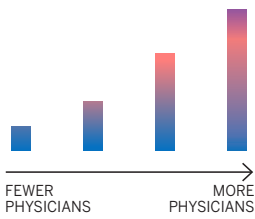
# GEOGRAPHIC DISTRIBUTION

## INDIANA'S PSYCHIATRIST WORKFORCE

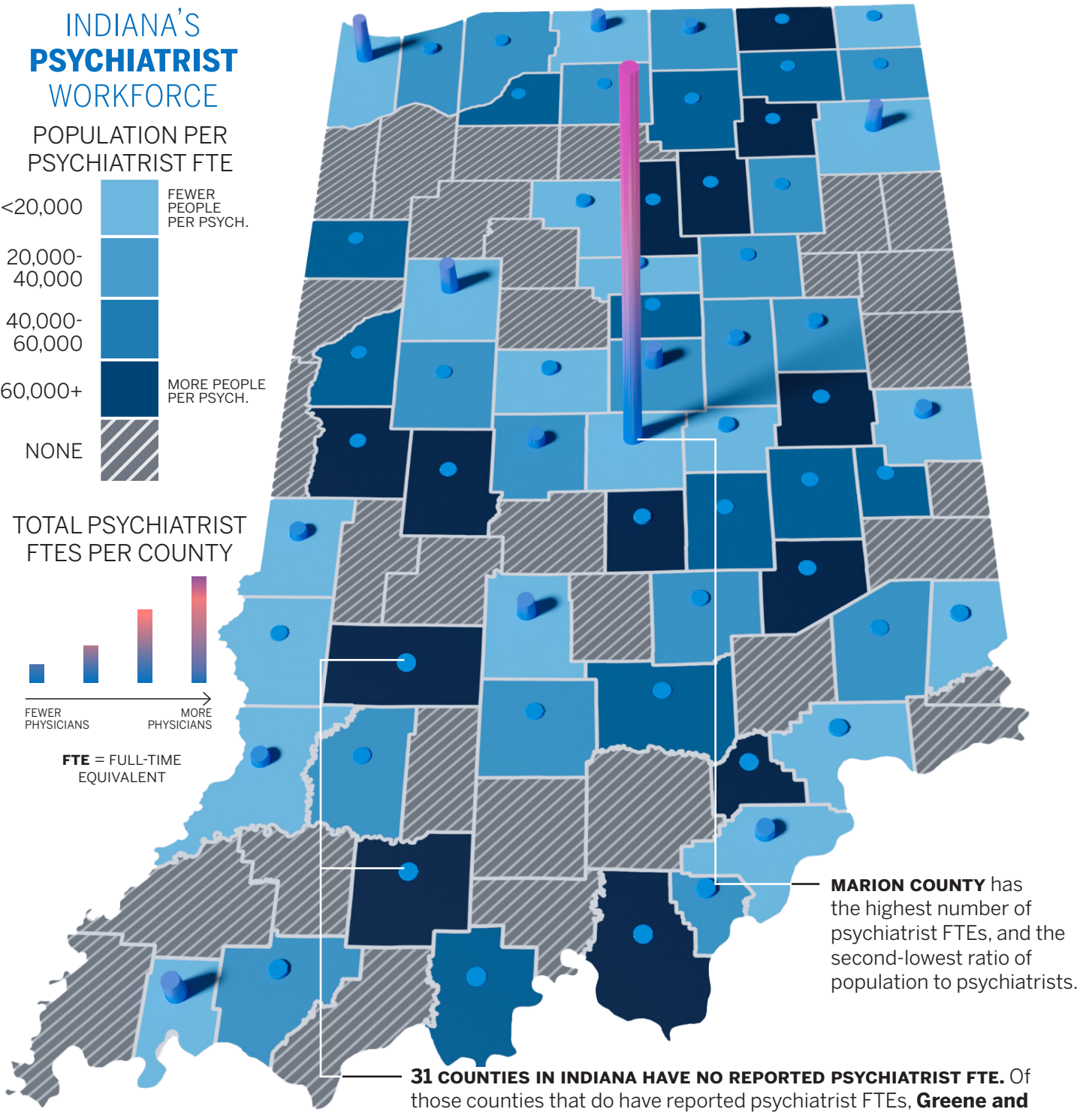
### POPULATION PER PSYCHIATRIST FTE



### TOTAL PSYCHIATRIST FTES PER COUNTY



FTE = FULL-TIME EQUIVALENT



**MARION COUNTY** has the highest number of psychiatrist FTEs, and the second-lowest ratio of population to psychiatrists.

**31 COUNTIES IN INDIANA HAVE NO REPORTED PSYCHIATRIST FTE.** Of those counties that do have reported psychiatrist FTEs, **Greene and Dubois counties** have the highest ratio of population to psychiatrist FTEs.

