

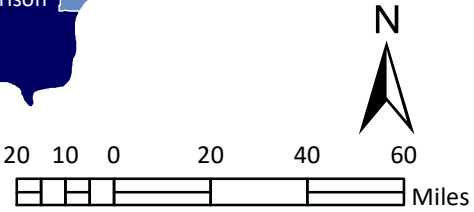
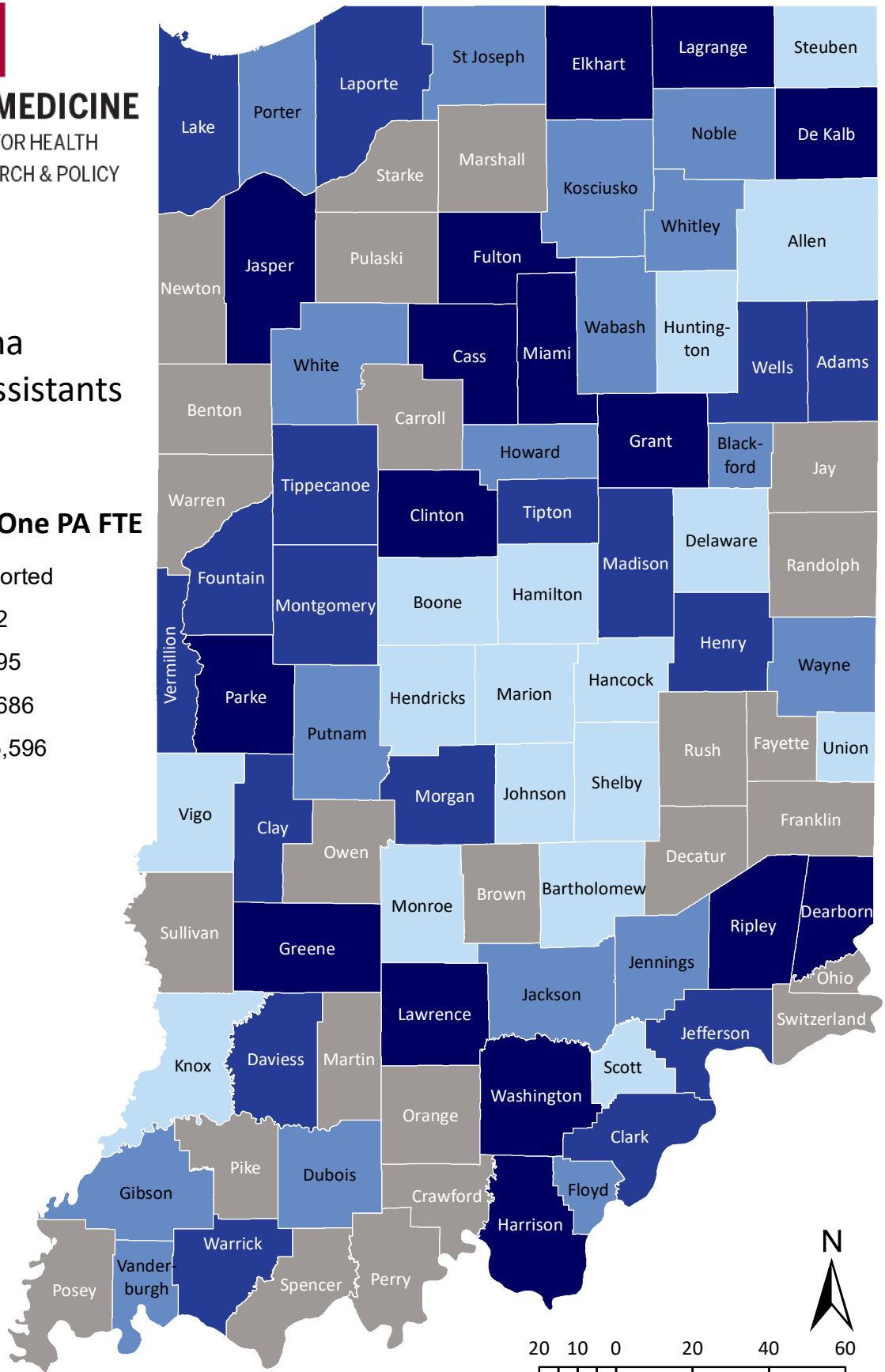
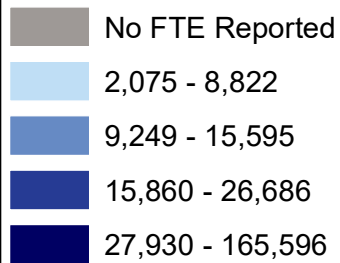


SCHOOL OF MEDICINE

BOWEN CENTER FOR HEALTH
WORKFORCE RESEARCH & POLICY

Indiana Physician Assistants

Population per One PA FTE



Source: 2018 Physician Assistant Re-Licensure Survey; America Community Survey, 5-year estimates, 2015.
Notes: Population to provider ratios cannot be calculated for counties with no reported PA FTE.